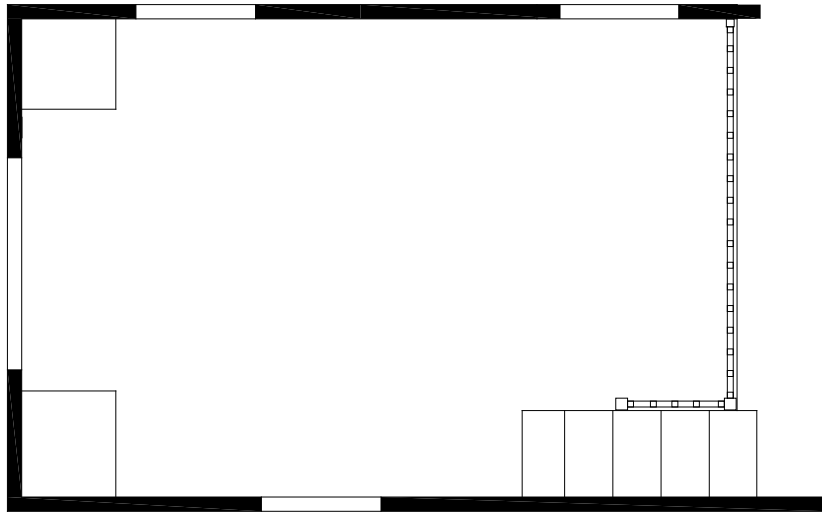


# The Parkvue

FRONT LIVING ROOM | 1238-FLL / 12' W x 36'6" L



## Mechanical

- 41,000 BTU Furnace
- LP & CO Gas Detectors
- Fire Extinguisher
- 20 Gallon Electric Water Heater
- Digital Thermostat

## Bathroom

- Bevel Edge Laminated Countertops with Backsplash
- Power Exhaust Vent
- 1 Piece Fiberglass Tub/Shower
- Curved Rod & Shower Curtain
- Porcelain Bath Sink

## Furniture

- Residential Sofa Hide-A-Bed
- Swivel Rocker
- Dinette with 4 Chairs or Bar Stools
- End Table with Lamp
- Therapedic Pillow Top Queen Bed

## Kitchen

- Raised Panel Hardwood Cabinet Doors
- 18" CF Frost-Free Refrigerator
- 30" Deluxe Gas Range with Clock Timer
- 30" Spacemaker Microwave
- Laminated Countertops with Backsplash

## Interior

- Roller-Bearing Drawer Guides
- Sliding Mirrored Wardrobe Doors
- Sat/Cable-Ready TV Jack in all Locations
- DVD System with Surround Sound
- Mini Blinds Throughout

## Construction

- 20 Year Asphalt Shingles
- 30 lb Rafters/R-11 Insulation
- Single Hung Vinyl Thermopane Windows with Low E Glass
- 5/8" Full Width Floor Decking
- 8" Steel I-Beam Chassis

