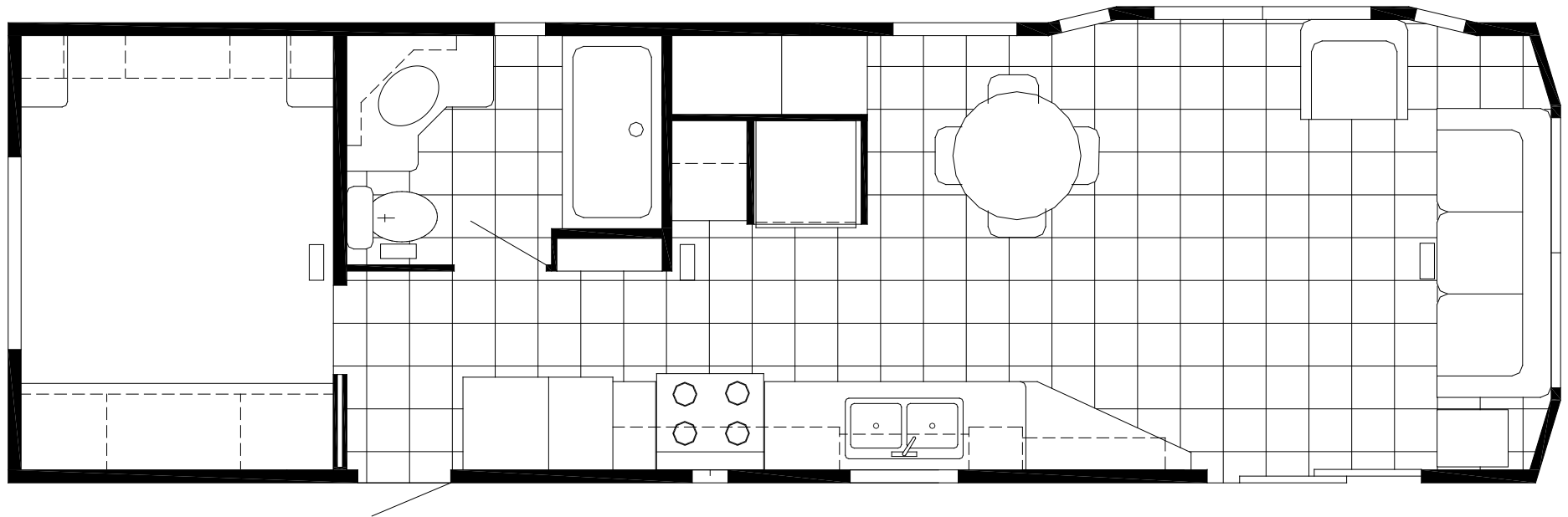


# The Parkvue

SIDE GALLEY KITCHEN | 1238-SGK / 12' W x 36'6" L



## Mechanical

- 20 Gallon Electric Water Heater
- LP & CO Gas Detectors
- Fire Extinguisher
- 41,000 BTU Furnace
- 50 Amp Service

## Kitchen

- Raised Panel Hardwood Cabinet Doors
- 18" CF Frost-Free Refrigerator
- 30" Deluxe Gas Range with Clock Timer
- 30" Spacemaker Microwave
- Laminated Countertops with Backsplash

## Furniture

- Residential Sofa
- Hide-A-Bed
- Swivel Rocker
- Dinette with 4 Chairs or Bar Stools
- End Table with Lamp
- Therapeutic Pillow Top Queen Bed

## Bathroom

- Bevel Edge Laminated Countertops with Backsplash
- Power Exhaust Vent
- 1 Piece Fiberglass Tub/Shower
- Curved Rod & Shower Curtain
- Porcelain Bath Sink

## Interior

- Roller-Bearing Drawer Guides
- Raised Panel Hardwood Cabinet Doors
- Sat/Cable-Ready TV Jack in all Locations
- Entertainment Center w/ DVD Surround
- Deluxe Wood Trim Package

## Construction

- Seaspray Gypsum Ceiling with Vapor Barrier
- R-21 Roof / R-19 Floor Insulation
- Ice & Water Guard Roof Underlayment
- OSB Sheathing on Exterior Walls
- Single Hung Vinyl Thermopane Windows with Low E Glass